



**WALLER  
MARINE**

*Since 1974*

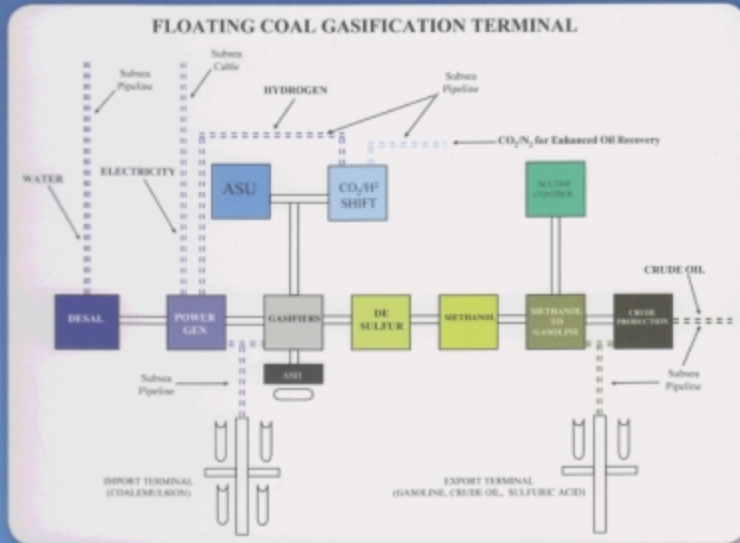
**NAVAL ARCHITECTURE & MARINE ENGINEERING  
SINGLE SERVICE & TURNKEY INTEGRATED SOLUTIONS**



**INVENTIVE, CREATIVE, PRACTICAL**



## Inventive



Waller Marine can push the technological envelope with new and different ways of doing things. Example left: Waller Marine's concept of a **TOTALLY GREEN Coal Gasification Quadruple Purpose Floating** that can generate electricity with hydrogen, provide enhanced oil recovery with CO<sub>2</sub>, produce fresh water and produce gasoline.

## Creative



## Practical



Waller Marine is a world leader in the creative design, engineering and construction of power barges. Example above: The world's largest floating power plant, a 220 MW Combined Cycle FFP installed at site. This large capacity plant is transportable and able to be moved where needed quickly.

Waller Marine supports the marine offshore and transportation industry operations technically with modifications and upgrades ensuring compliance by working with all classification societies and with international and federal regulatory agencies.



## Naval Architecture & Maritime Engineering

*Single Service and Turnkey Integrated Solutions*



With a highly diverse and experienced group of professionals, Waller Marine is well-positioned to manage the many services needed for a total solution or to provide a single service to meet the offshore needs of companies anywhere in the world. Our clients include those engaged in:

- Drilling
- Exploration
- Offshore Support Services
- Construction
- Ocean Transportation
- River Transportation
- Diving Support

During Waller's 30-years-plus of operation, Waller has successfully ridden the wave of the oil and gas, and transportation industries, both domestic and foreign. We have experienced owning and operating our own shipyards, building tugs and barges and offshore support vessels, as well as production platforms and conversions of naval vessels for commercial use. That wealth of experience remains with us today for the benefit of our clients in a wide variety of services.

- Integrated Services
- Naval Architecture
- Marine Engineering
- Technical Support
- Technical Software
- Marine Salvage
- Regulatory Compliance
- Special Projects



# Ready to Serve with Professionalism and Integrity

## Integrated Services

Management – Concept – Design –  
Engineering – Procurement –  
Construction – Regulatory  
Compliance – Delivery –  
Commissioning

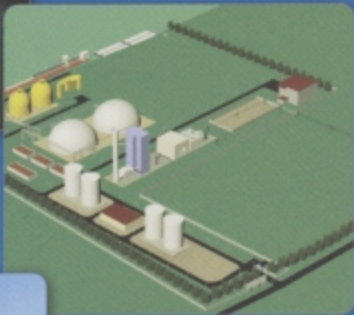
- EPC Contracting
- New Vessel Construction
- Vessel Conversion, Modification & Upgrade
- Project Management
- Project Development



Project Management:  
130 MW Diesel Powered  
Delivered to the Philippines



Project Management:  
35 MW Power Barge – Design,  
Engineering, Construction and  
Delivery to Lagos, Nigeria.



EPC Contract: 100 MW  
Barge Mounted Circulating  
Fluidized Bed, Coal Fired  
Power



Engineering and Project  
Management: 220 MW Combined  
Cycle Power Barge for Hyundai  
Engineering

## Naval Architecture Services

*The Traditional – The Specialized – The Impossible*

- Classic Naval Architecture
- Ship Design
- Stability Analysis
- Hull Structures
- ANSYS Structural Analysis
- Vibration Analysis
- Mooring Analysis
- Speed & Power
- Propeller Design



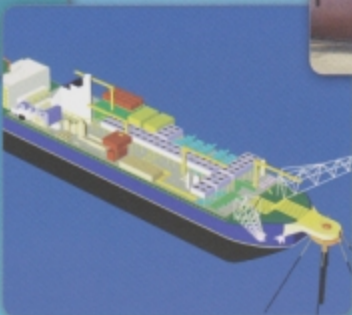
ANSYS Structural Analysis: An  
integral part of Waller Marine's  
naval architecture services



500,000 BBL Shuttle  
Tanker – Gulf of Mexico:  
Integrated Tug Barge  
System



MV. "Fugro Explorer"  
Offshore Coring Vessel.  
Consulting & Modification



5,000 Ton Per Day Gas to Methanol  
FPSO: Designed and model-tested  
the world's largest proposed  
floating methanol plant ship for  
the US DOT.



The FLNG "Margaret Hill" -  
Proposed to be the first LNG vessel  
to liquefy, store & unload LNG.

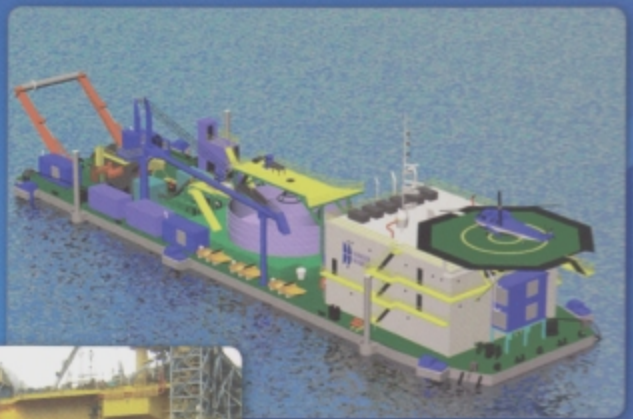


# Setting the Standard for High Quality Naval Architecture and Marine Engineering Services

## Marine Engineering Services

*Propulsion – Positioning – Cargo Handling – Piping – Electrical*

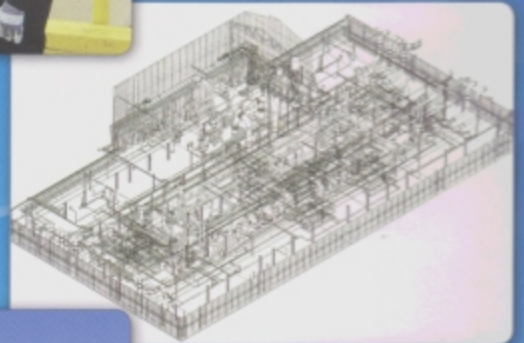
- Ship Propulsion Systems
- Dynamic Positioning Systems
- Repowering
- Liquid Cargo Handling Systems
- Bulk Cargo Handling Systems
- Shipboard Piping & Electrical Systems



## Technical Support Services

*Drawings – Manuals – Approvals – Supervision – Surveys*

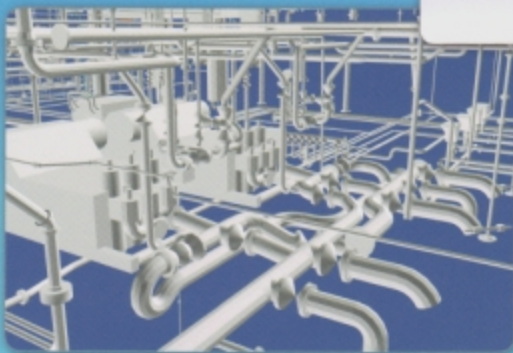
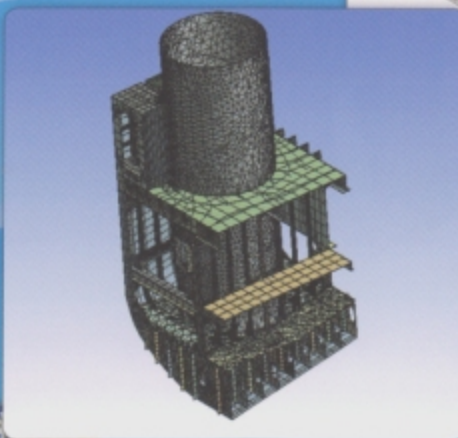
- Production of Working Drawings
- Operating Manuals
- Plan Approval for Class
- Construction Supervision
- Dry Dock Surveys
- Condition Surveys
- Valuation Surveys
- Hull Gauging
- Draft & Deadweight Surveys
- Inclining Experiments



## Technical Software Services

*The Latest Engineering Software – Modeling – Training – Manuals*

- 3-Dimensional Vessel Modeling
- Training Programs
- Operations Manuals
- Quality Manuals





# Developing Unusual Solutions to Meet Industrial Protocols and Regulations



## Marine Salvage

*Vessels – Drilling Rigs – Barges – For Owners and Salvors*

- Marine Response Planning
- Preparation of Salvage Plans
- Vessel Salvage Implementation



## Regulatory Compliance Services

*Federal – State – Local – Third Party*

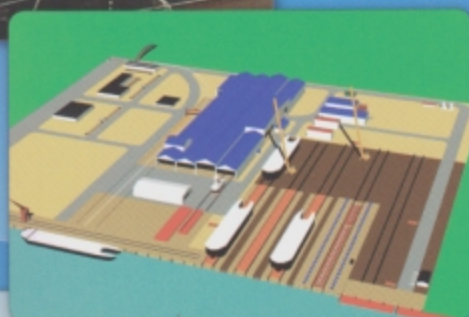
- USCG Compliance Audits
- USCG 30 Year Survey & Structural Assessments
- Fire & Safety Plans
- Saturated Diving Systems
- Class Society Compliance
- IMO Compliance



## Special Projects

*We do our Best to Meet your Special Needs*

- Project Cargo Tie-Down Analysis
- Bridge Construction Technical Support
- Hydrographic Data Acquisition
- Power Generation Facilities Installation
- Legal Support - Expert Witness
- Shipbuilding Facility Design



For your Naval Architecture and Maritime Engineering needs, from a single service to the very large and complex that possibly has never been done before, call, email, fax or write Waller Marine.







**Inventive, Creative, Practical**

Waller Marine, Inc.  
14410 West Sytanfield  
Houston, Texas 77014  
Ph: 281-444-9650  
Fax: 281-444-8055  
[www.wallermarine.com](http://www.wallermarine.com)  
[awaller@wallermarine.com](mailto:awaller@wallermarine.com)